

XFrame Shop Drawings for

# Standard Reference Details

Project Name & Address

N/A

Drawing Set Version:

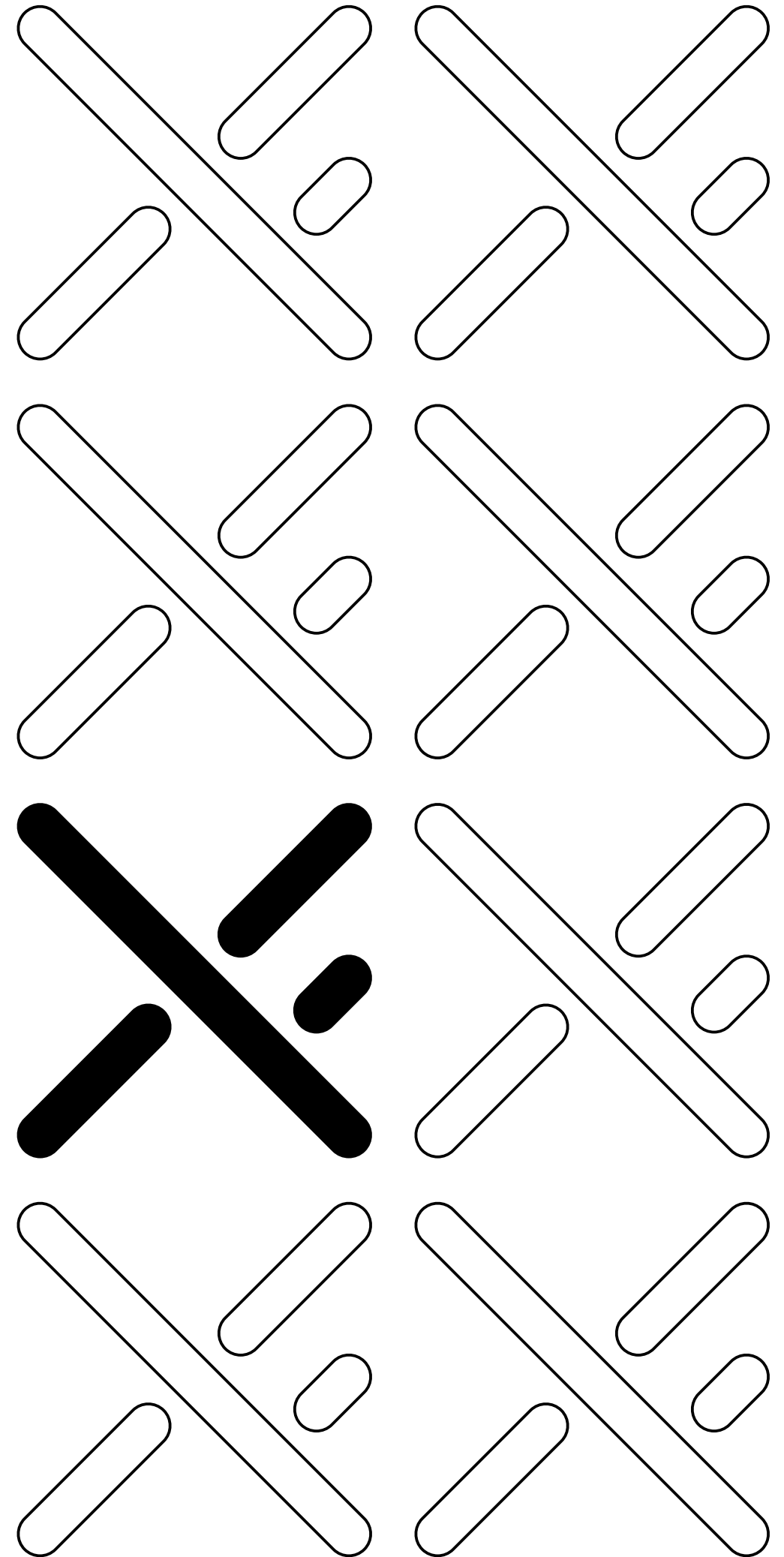
**Specifications | Reference**

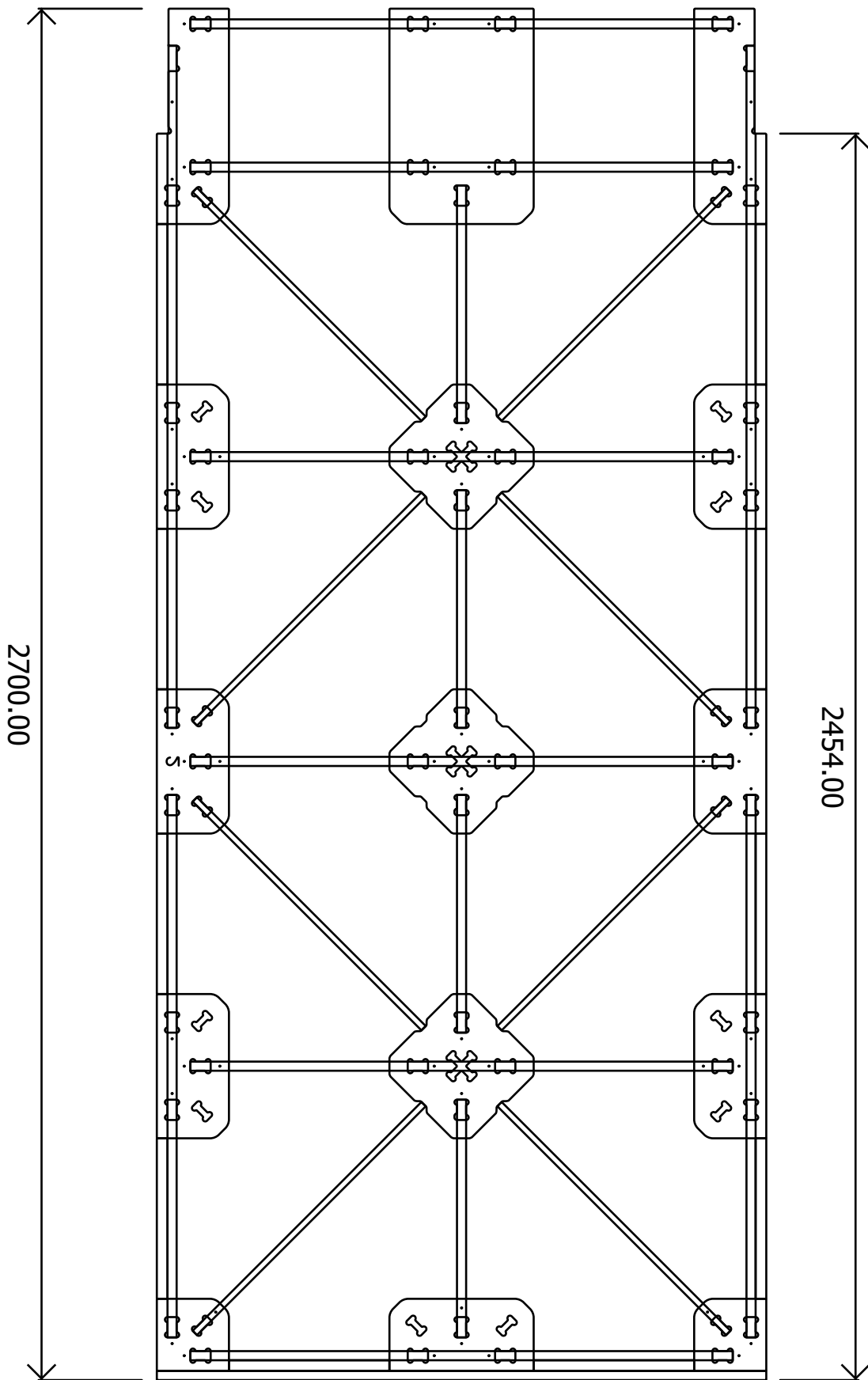
Date Issued:

**10-04-26**

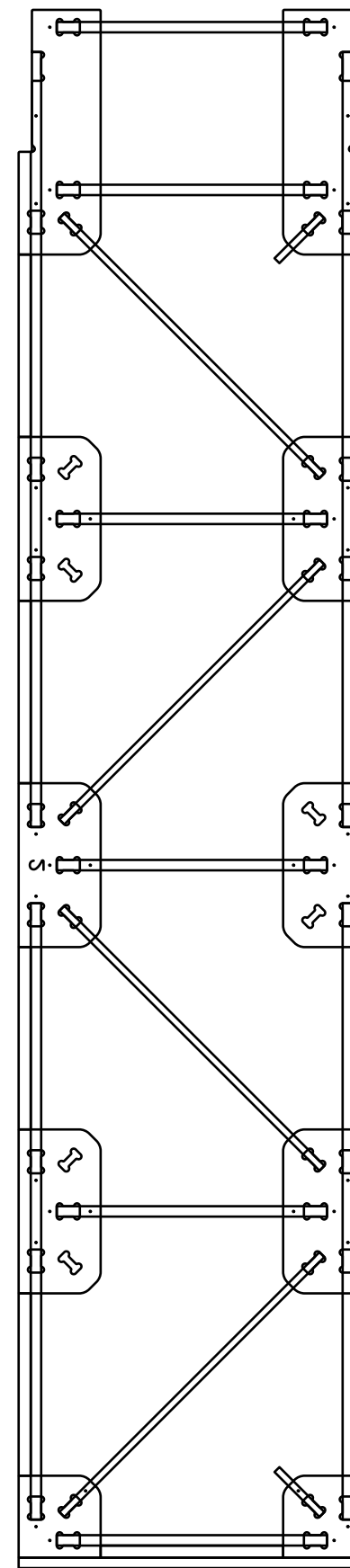
Contents:

- SP0 Cover
- SP1 Standard 2.7m Wall Panel Elevations
- SP2 Standard 2.7m Wall Panel Elevations - False Ceiling
- SP3 Standard Wall Panel Sections
- SP4 Standard Wall Panel Junctions
- SP5 Standard 2.7m Wall Panel Service Chasing
- SP6 Standard External Finishing Elevations
- SP7 Standard Internal Finishing Elevations
- SP8 Standard Door Panel Elevations
- SP9 Standard Window Panel Elevations



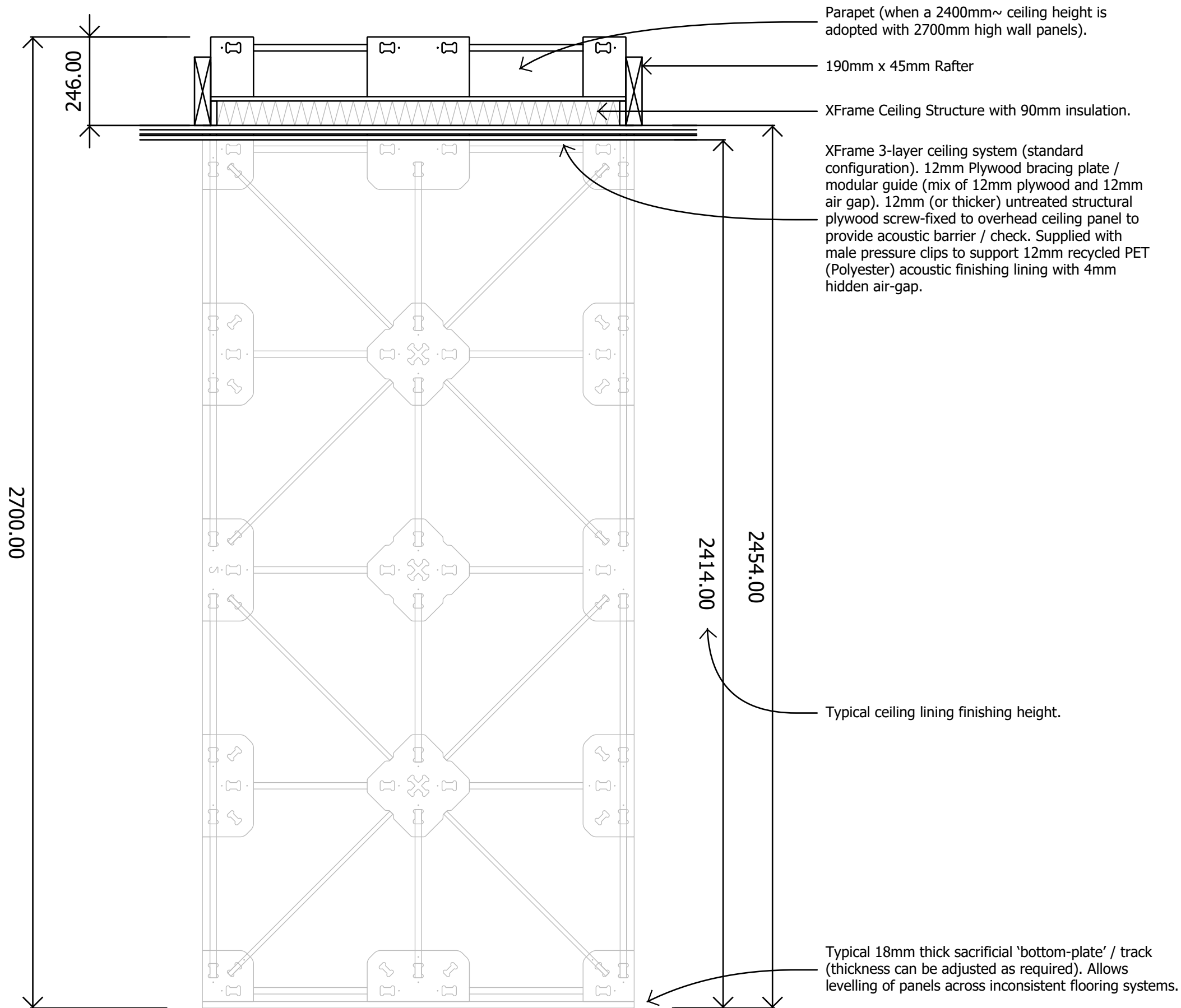


2700 x 1200mm Wall Panel



2700 x 600mm Wall Panel

<b>CONSTRUCTION NOTES</b>	
Technical Office: NZ/AUS	Date: Apr-26
<b>Structural Material Specification</b>	
Radiata CD Structural Plywood F8/F8 Untreated. E0   FSC   AS/NZS 2269 Compliant. Layer-Up: 12-24-5, 17-38-5, 21-38-6 - or as specified).	
<b>Fixing Specifications</b>	
<ul style="list-style-type: none"> <li>- All washers are to be square.</li> <li>- Washers are to be 20x20x1.5mm for bolts not exceeding 8mm.</li> <li>- Washers are to be 35x35x3 for bolts not exceeding 12mm.</li> <li>- All metal hardware to be min. Zinc Plated (interior use only).</li> <li>- DPC's to be installed between all masonry &amp; frame surfaces.</li> <li>- Vertical deviation must not exceed 1:500.</li> </ul>	
<b>XFrame Component Quality</b>	
<ul style="list-style-type: none"> <li>- All XFrame panel components must be free of damage.</li> <li>- All XFrame panel components must be fully seated.</li> <li>- Unseated parts can be corrected on site as required.</li> <li>- Ensure each locking plate is restrained via clip hardware.</li> <li>- Parts with delamination exceeding 10mm in length must be replaced.</li> </ul>	
<b>Installation Quality Assurance</b>	
<ul style="list-style-type: none"> <li>- Use shims to level panels as required.</li> <li>- Ensure shims are under anchor fixings (if required).</li> <li>- Check nuts for tightness prior to closing cavity.</li> <li>- Ensure insulation is continuous.</li> <li>- Pack any deviations/voids with loose insulation.</li> <li>- Replace damaged lining clips/linings.</li> <li>- Apply acoustic seals as specified.</li> <li>- Remove debris from internal wall cavity.</li> <li>- Verify that all bolts have correct washers.</li> <li>- Check bolt location against plans.</li> <li>- Validate all lining clips are fully seated.</li> <li>- Ensure structure has appropriate structural anchors.</li> <li>- Notify XFrame of any deviation from shop drawings.</li> </ul>	
<b>Drawing Information</b>	
<b>Project Name: Standard Reference Details</b>	
Author: GF	XF Version: 8.26
Region: Global	Technical Office: NZ/AUS
Version: 10-04-26	Reference
<b>SP-1</b>	Copyright X-Frame PTY Limited 2023. XFrame™ and the XFrame Logo is a registered trademark of X-Frame Pty Ltd, Australia. The XFrame system is protected under WIPO Patent AU2022901589 and WO/2022/056598. Infringement on the patent is strictly prohibited.



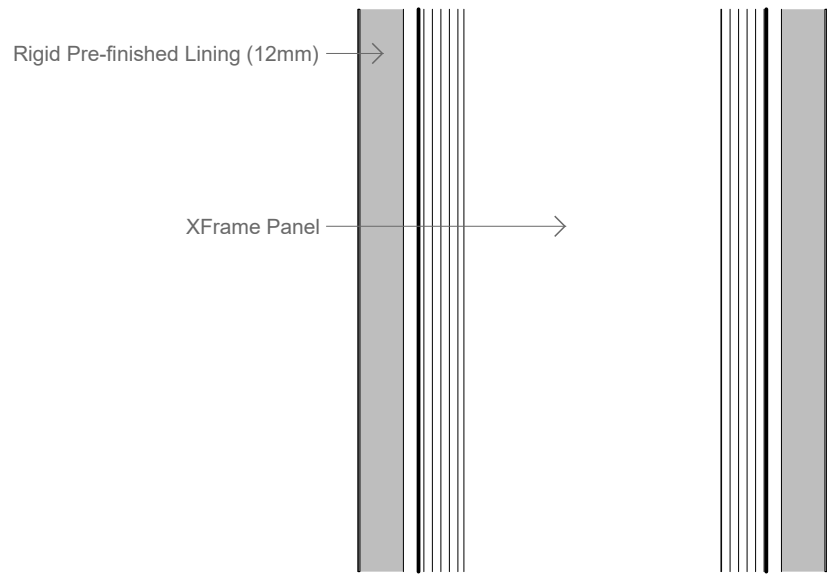
2700 x 1200mm Wall Panel

<b>CONSTRUCTION NOTES</b>	
Technical Office: NZ/AUS	Date: Apr-26
<b>Structural Material Specification</b>	
Radiata CD Structural Plywood F8/F8 Untreated. E0   FSC   AS/NZS 2269 Compliant. Layer-Up: 12-24-5, 17-38-5, 21-38-6 - or as specified).	
<b>Fixing Specifications</b>	
<ul style="list-style-type: none"> <li>- All washers are to be square.</li> <li>- Washers are to be 20x20x1.5mm for bolts not exceeding 8mm.</li> <li>- Washers are to be 35x35x3 for bolts not exceeding 12mm.</li> <li>- All metal hardware to be min. Zinc Plated (interior use only).</li> <li>- DPC's to be installed between all masonry &amp; frame surfaces.</li> <li>- Vertical deviation must not exceed 1:500.</li> </ul>	
<b>XFrame Component Quality</b>	
<ul style="list-style-type: none"> <li>- All XFrame panel components must be free of damage.</li> <li>- All XFrame panel components must be fully seated.</li> <li>- Unseated parts can be corrected on site as required.</li> <li>- Ensure each locking plate is restrained via clip hardware.</li> <li>- Parts with delamination exceeding 10mm in length must be replaced.</li> </ul>	
<b>Installation Quality Assurance</b>	
<ul style="list-style-type: none"> <li>- Use shims to level panels as required.</li> <li>- Ensure shims are under anchor fixings (if required).</li> <li>- Check nuts for tightness prior to closing cavity.</li> <li>- Ensure insulation is continuous.</li> <li>- Pack any deviations/voids with loose insulation.</li> <li>- Replace damaged lining clips/linings.</li> <li>- Apply acoustic seals as specified.</li> <li>- Remove debris from internal wall cavity.</li> <li>- Verify that all bolts have correct washers.</li> <li>- Check bolt location against plans.</li> <li>- Validate all lining clips are fully seated.</li> <li>- Ensure structure has appropriate structural anchors.</li> <li>- Notify XFrame of any deviation from shop drawings.</li> </ul>	
<b>Drawing Information</b>	
<b>Project Name: Standard Reference Details</b>	
Author: GF	XF Version: 8.26
Region: Global	Technical Office: NZ/AUS
Version: 10-04-26	Reference
<b>SP-2</b>	Copyright X-Frame PTY Limited 2023. XFrame™ and the XFrame Logo is a registered trademark of X-Frame Pty Ltd, Australia. The XFrame system is protected under WIPO Patent AU2022901589 and WO/2022/056598. Infringement on the patent is strictly prohibited.



Drawing Name:

# Standard 2.7m Wall Panel Elevations - False Ceiling



AD-08-01

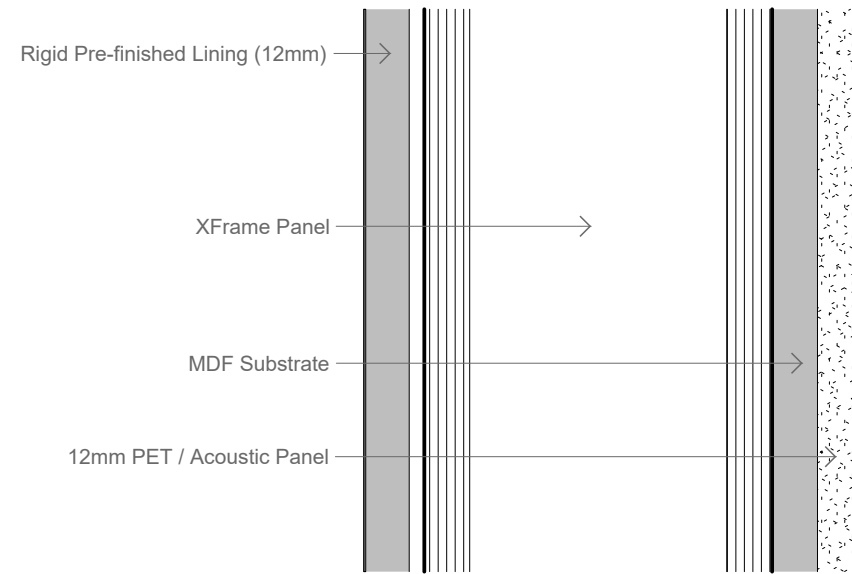
**Section Detail - XFrame Wall Cross-Section A**

Scale 1:2

Rigid Pre-finished Lining (12mm)

4mm Fixing Gap, 92mm XFrame Panel.

Rigid Pre-finished Lining (12mm)



AD-08-02

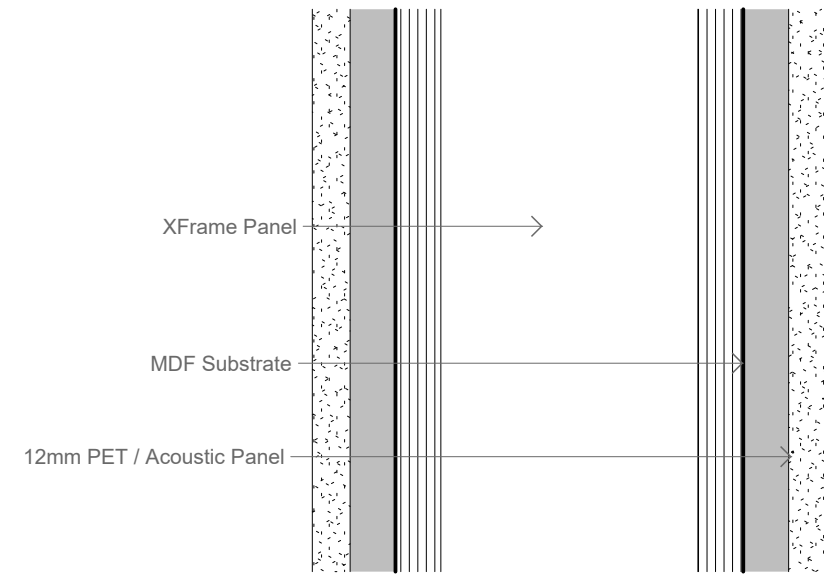
**Section Detail - XFrame Wall Cross-Section B**

Scale 1:2

Rigid Pre-finished Lining (12mm)

4mm Fixing Gap, 92mm XFrame Panel.

12mm Acoustic Wall Covering on VL03 or RCP Clip systems over 12mm MDF Substrate supported by XF010 recessed clips.



AD-08-03

**Section Detail - XFrame Wall Cross-Section C**

Scale 1:2

12mm Acoustic Wall Covering on VL03 or RCP Clip systems over 12mm MDF Substrate supported by XF010 recessed clips.

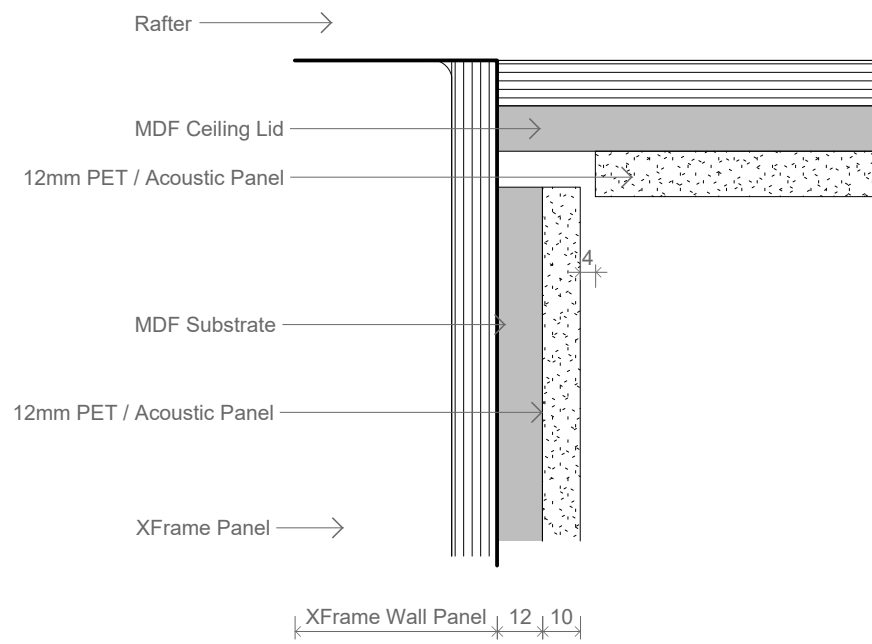
4mm Fixing Gap, 92mm XFrame Panel.

12mm Acoustic Wall Covering on VL03 or RCP Clip systems over 12mm MDF Substrate supported by XF010 recessed clips.

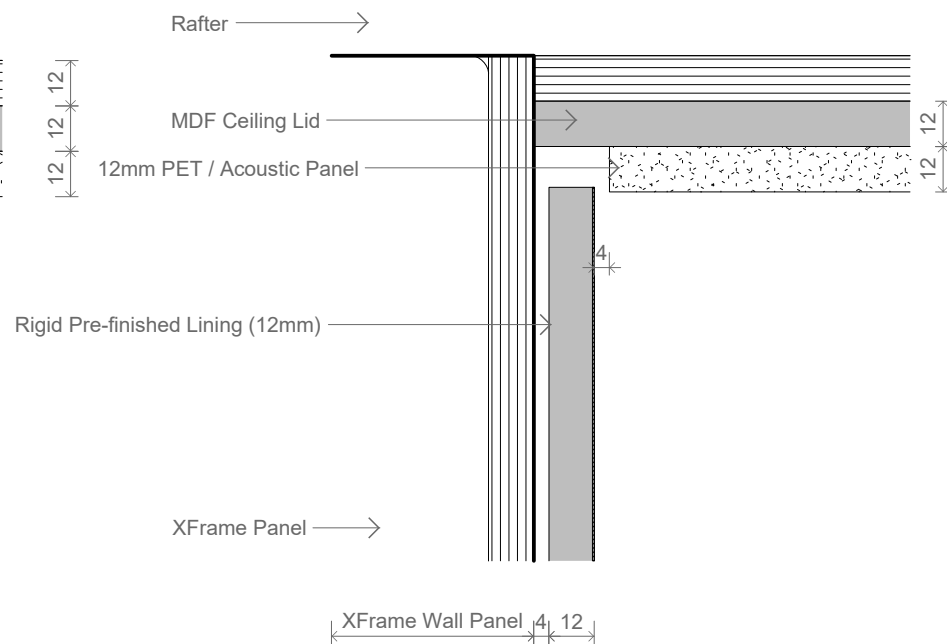
Typical assemblies shown achieve a STC performance level of between 39 and 41 (subject to finishing details).

STC performance can be increased to 42-44 via increasing the depth of rigid substrates (i.e. 12mm to 16mm MDF / Plywood / Strandboard backings).

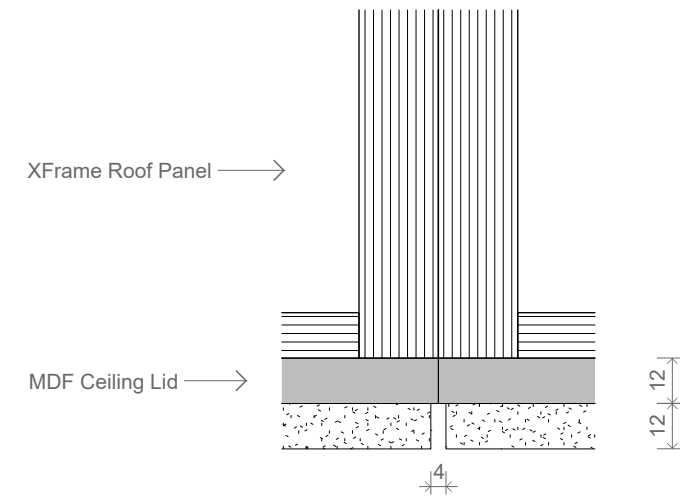
STC performance values noted here are indicative only and are subject to construction detailing, material variations, independent testing and specification variations.



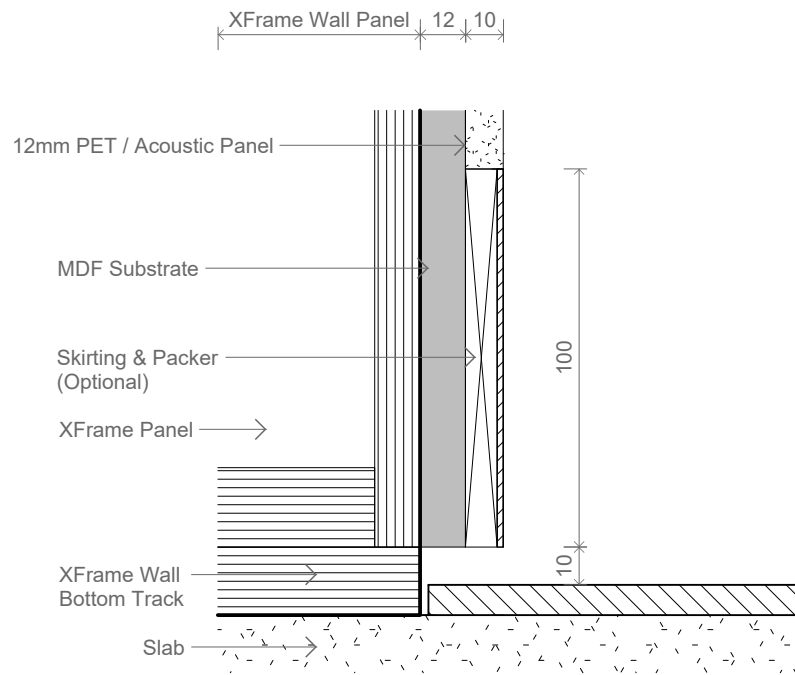
AD-06-01  
Section Detail - XFrame Wall-to-Ceiling  
10mm Acoustic Wall Covering  
12mm Substrate  
Flush Fixed



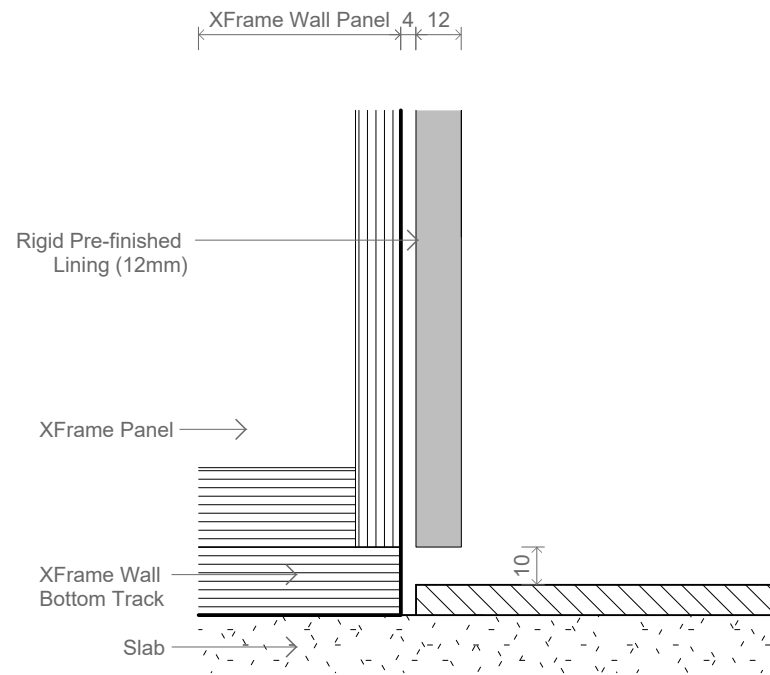
AD-06-02  
Section Detail - XFrame Wall-to-Ceiling  
12mm Veneered Panel [WC04]  
4mm Fixing Offset



AD-06-06  
Section Detail - XFrame Ceiling-to-Ceiling  
Scale 1:2

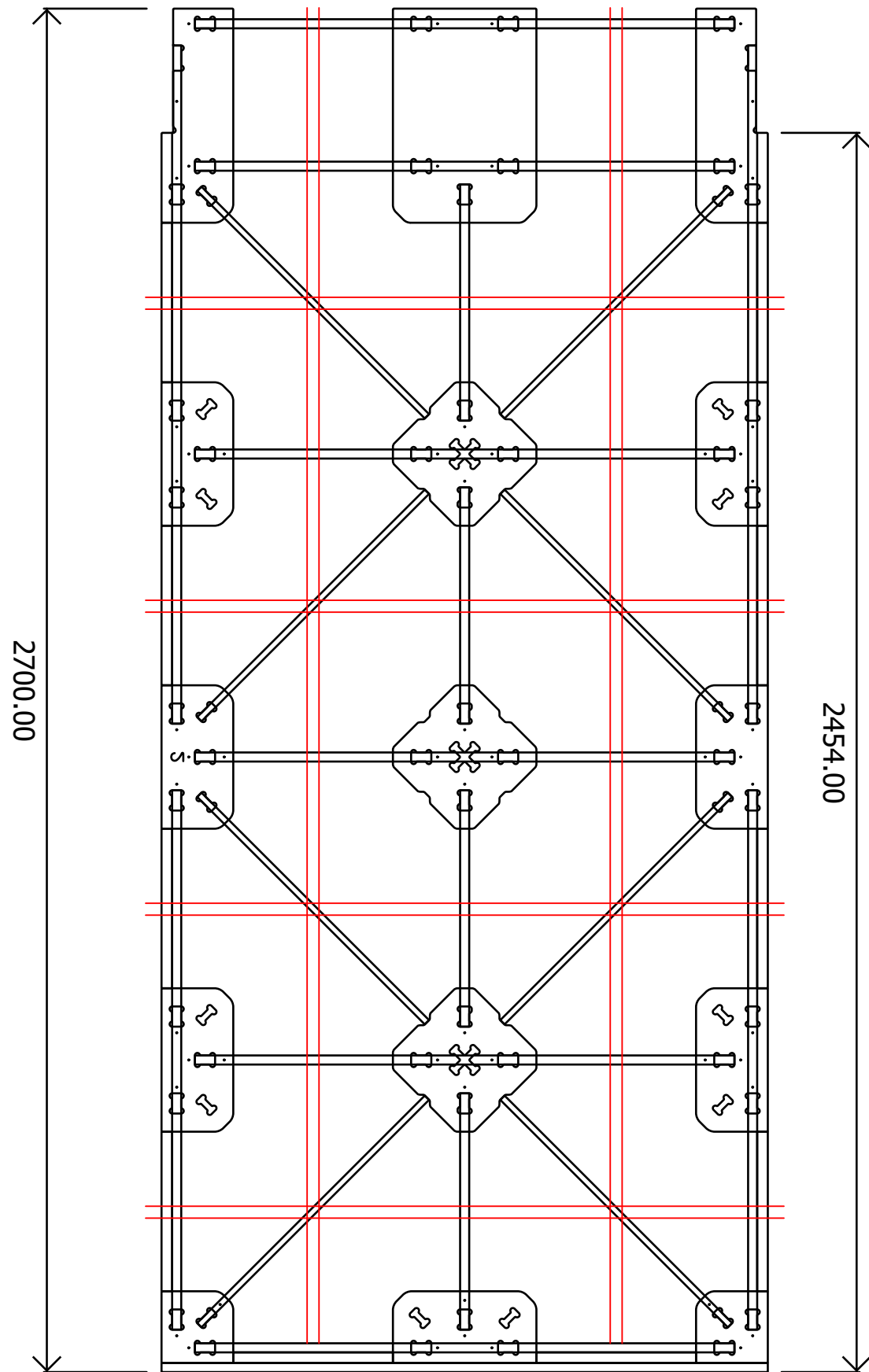


AD-06-04  
Section Detail - XFrame Wall-to-Floor  
12mm Acoustic Wall Covering  
12mm Substrate  
100mm Aluminium Skirting w/ 4mm Packer

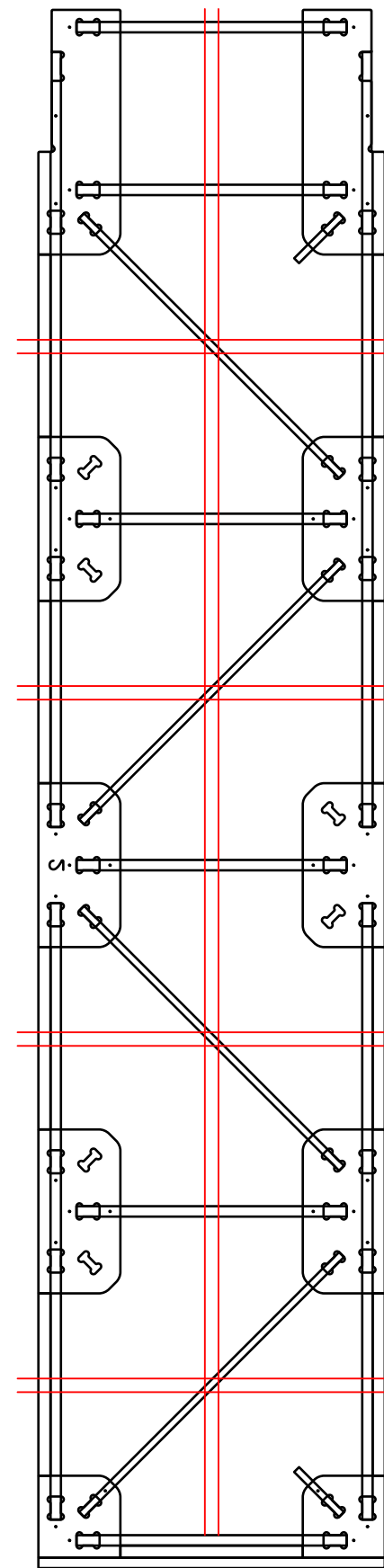


AD-06-05  
Section Detail - XFrame Wall-to-Floor  
12mm Veneered Panel  
4mm Fixing Offset

Red lines indicate 25mm dia. pre-cut service pass-through openings.



2700 x 1200mm Wall Panel



2700 x 600mm Wall Panel

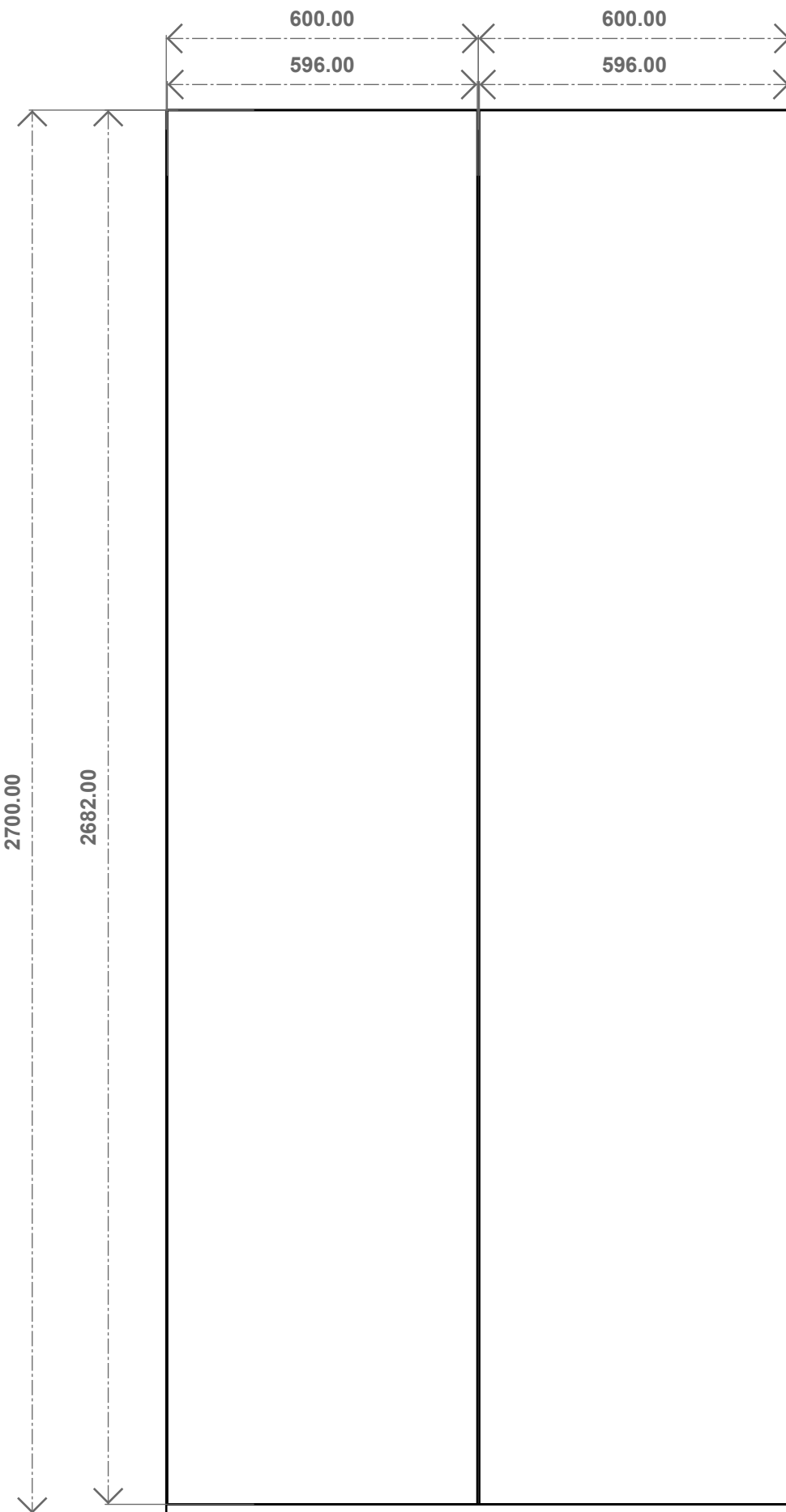
<b>CONSTRUCTION NOTES</b>	
Technical Office: NZ/AUS	Date: Apr-26
<b>Structural Material Specification</b>	
Radiata CD Structural Plywood F8/F8 Untreated. E0   FSC   AS/NZS 2269 Compliant. Layer-Up: 12-24-5, 17-38-5, 21-38-6 - or as specified).	
<b>Fixing Specifications</b>	
<ul style="list-style-type: none"> <li>- All washers are to be square.</li> <li>- Washers are to be 20x20x1.5mm for bolts not exceeding 8mm.</li> <li>- Washers are to be 35x35x3 for bolts not exceeding 12mm.</li> <li>- All metal hardware to be min. Zinc Plated (interior use only).</li> <li>- DPC's to be installed between all masonry &amp; frame surfaces.</li> <li>- Vertical deviation must not exceed 1:500.</li> </ul>	
<b>XFrame Component Quality</b>	
<ul style="list-style-type: none"> <li>- All XFrame panel components must be free of damage.</li> <li>- All XFrame panel components must be fully seated.</li> <li>- Unseated parts can be corrected on site as required.</li> <li>- Ensure each locking plate is restrained via clip hardware.</li> <li>- Parts with delamination exceeding 10mm in length must be replaced.</li> </ul>	
<b>Installation Quality Assurance</b>	
<ul style="list-style-type: none"> <li>- Use shims to level panels as required.</li> <li>- Ensure shims are under anchor fixings (if required).</li> <li>- Check nuts for tightness prior to closing cavity.</li> <li>- Ensure insulation is continuous.</li> <li>- Pack any deviations/voids with loose insulation.</li> <li>- Replace damaged lining clips/linings.</li> <li>- Apply acoustic seals as specified.</li> <li>- Remove debris from internal wall cavity.</li> <li>- Verify that all bolts have correct washers.</li> <li>- Check bolt location against plans.</li> <li>- Validate all lining clips are fully seated.</li> <li>- Ensure structure has appropriate structural anchors.</li> <li>- Notify XFrame of any deviation from shop drawings.</li> </ul>	
<b>Drawing Information</b>	
<b>Project Name: Standard Reference Details</b>	
Author: GF	XF Version: 8.26
Region: Global	Technical Office: NZ/AUS
Version: 10-04-26	Reference
<b>SP-5</b>	Copyright X-Frame PTY Limited 2023. XFrame™ and the XFrame Logo is a registered trademark of X-Frame Pty Ltd, Australia. The XFrame system is protected under WIPO Patent AU2022901589 and WO/2022/056598. Infringement on the patent is strictly prohibited.



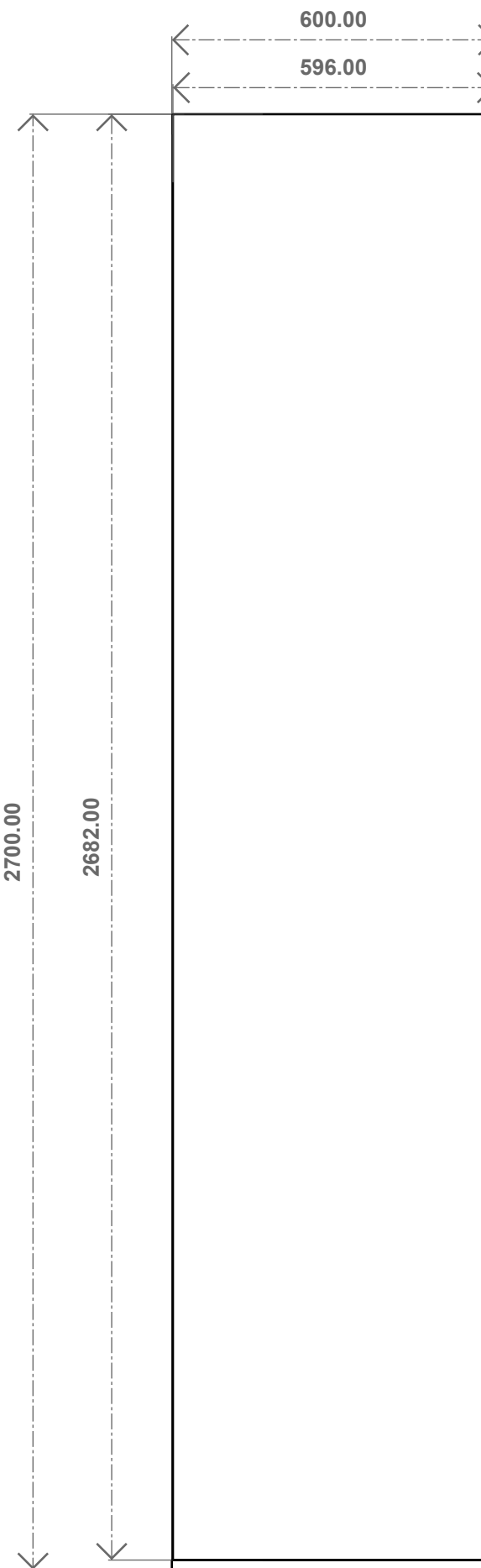
XFRAME™

Drawing Name:

# Standard 2.7m Wall Panel Service Chasing

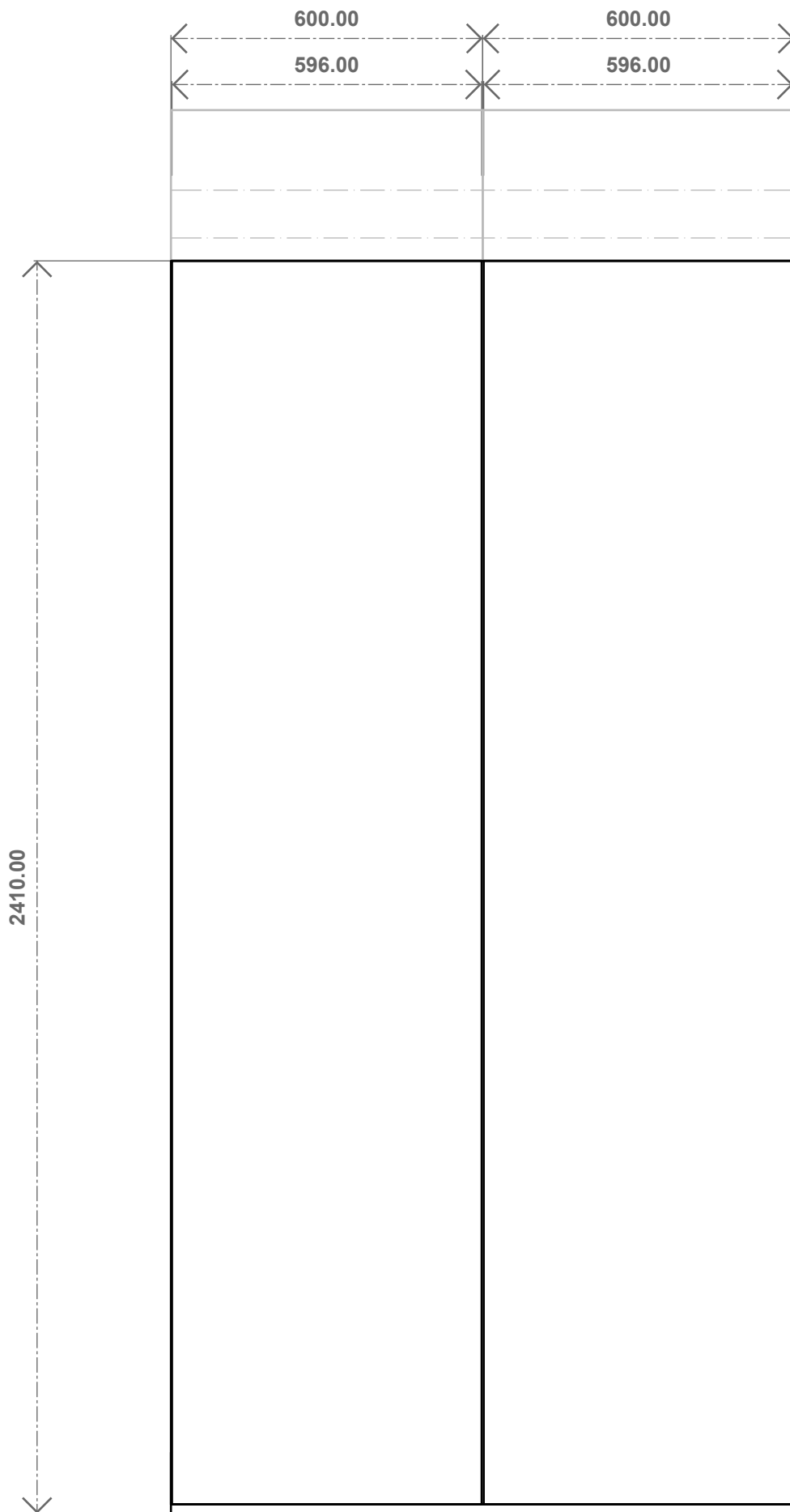


2700 x 1200mm Wall Panel

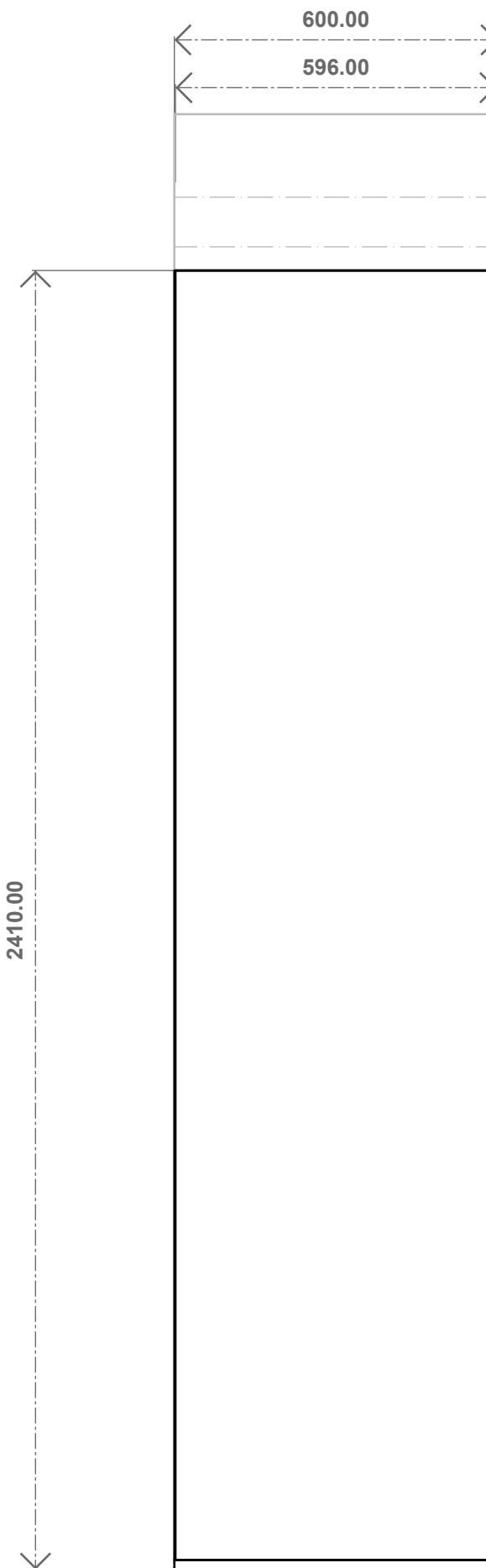


2700 x 600mm Wall Panel

CONSTRUCTION NOTES	
Technical Office: NZ/AUS	Date: Apr-26
Structural Material Specification	
Radiata CD Structural Plywood F8/F8 Untreated. E0   FSC   AS/NZS 2269 Compliant. Layer-Up: 12-24-5, 17-38-5, 21-38-6 - or as specified).	
Fixing Specifications	
<ul style="list-style-type: none"> <li>- All washers are to be square.</li> <li>- Washers are to be 20x20x1.5mm for bolts not exceeding 8mm.</li> <li>- Washers are to be 35x35x3 for bolts not exceeding 12mm.</li> <li>- All metal hardware to be min. Zinc Plated (interior use only).</li> <li>- DPC's to be installed between all masonry &amp; frame surfaces.</li> <li>- Vertical deviation must not exceed 1:500.</li> </ul>	
XFrame Component Quality	
<ul style="list-style-type: none"> <li>- All XFrame panel components must be free of damage.</li> <li>- All XFrame panel components must be fully seated.</li> <li>- Unseated parts can be corrected on site as required.</li> <li>- Ensure each locking plate is restrained via clip hardware.</li> <li>- Parts with delamination exceeding 10mm in length must be replaced.</li> </ul>	
Installation Quality Assurance	
<ul style="list-style-type: none"> <li>- Use shims to level panels as required.</li> <li>- Ensure shims are under anchor fixings (if required).</li> <li>- Check nuts for tightness prior to closing cavity.</li> <li>- Ensure insulation is continuous.</li> <li>- Pack any deviations/voids with loose insulation.</li> <li>- Replace damaged lining clips/linings.</li> <li>- Apply acoustic seals as specified.</li> <li>- Remove debris from internal wall cavity.</li> <li>- Verify that all bolts have correct washers.</li> <li>- Check bolt location against plans.</li> <li>- Validate all lining clips are fully seated.</li> <li>- Ensure structure has appropriate structural anchors.</li> <li>- Notify XFrame of any deviation from shop drawings.</li> </ul>	
Drawing Information	
12mm MDF with Tasmanian Oak Veneer (FSC CoC) Vertically orientated A grade quarter sawn (light graded) veneer with 8022-20 MIROTEC WB Clear Sealer, 8060-1-20 MIROTEC WB Clear Matt Top Coat.	
Fixed to frames using XFrame 010 Nylon IJM Clip (using 32mm CSK chipboard screws).	
Panels maintain an 18mm shadow gap at base.	
Project Name: Standard Reference Details	
Author: GF	XF Version: 8.26
Region: Global	Technical Office: NZ/AUS
Version: 10-04-26	Reference
<b>SP-6</b>	Copyright X-Frame PTY Limited 2023. XFrame™ and the XFrame Logo is a registered trademark of X-Frame Pty Ltd, Australia. The XFrame system is protected under WIPO Patent AU2022901589 and WO/2022/056598. Infringement on the patent is strictly prohibited.

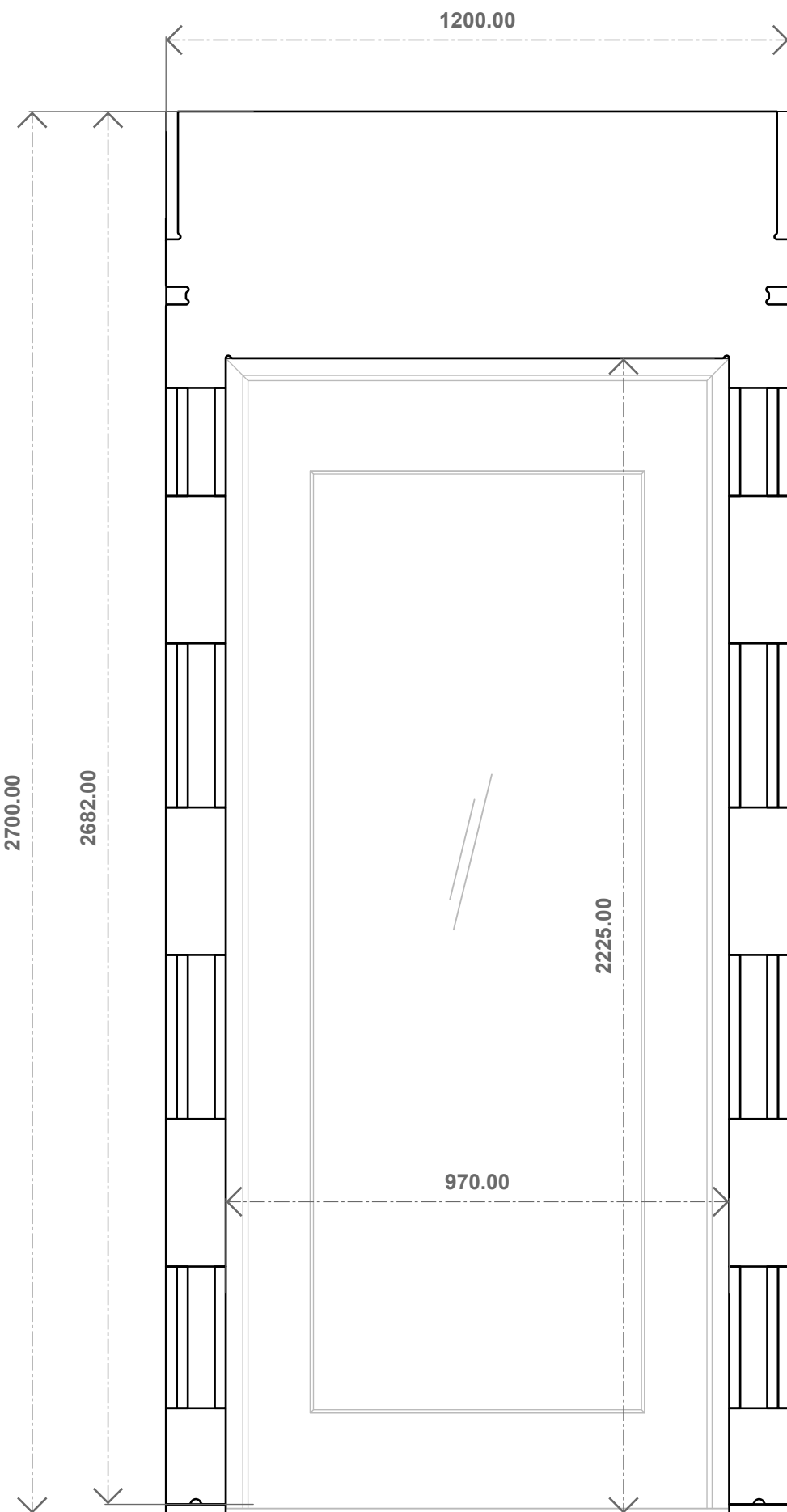


2700 x 1200mm Wall Panel

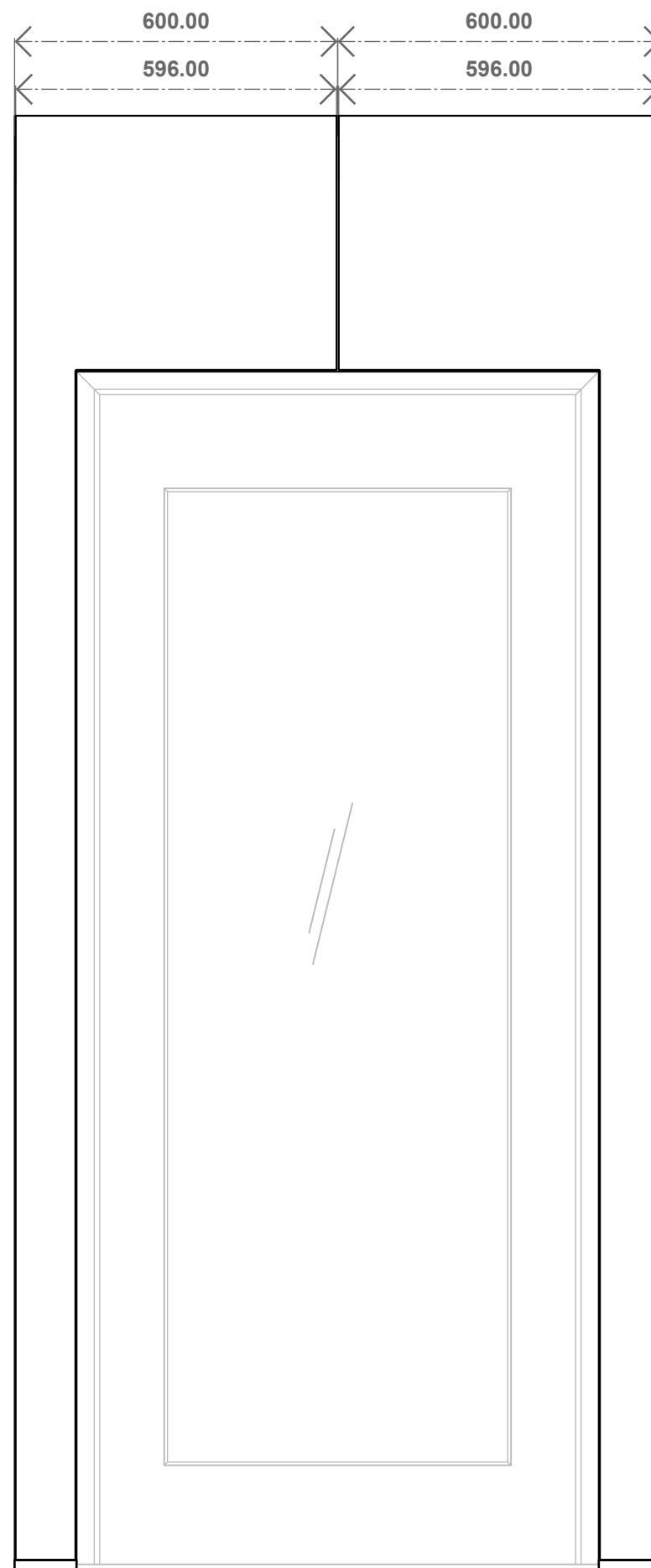


2700 x 600mm Wall Panel

CONSTRUCTION NOTES	
Technical Office: NZ/AUS	Date: Apr-26
Structural Material Specification	
Radiata CD Structural Plywood F8/F8 Untreated. E0   FSC   AS/NZS 2269 Compliant. Layer-Up: 12-24-5, 17-38-5, 21-38-6 - or as specified).	
Fixing Specifications	
<ul style="list-style-type: none"> <li>- All washers are to be square.</li> <li>- Washers are to be 20x20x1.5mm for bolts not exceeding 8mm.</li> <li>- Washers are to be 35x35x3 for bolts not exceeding 12mm.</li> <li>- All metal hardware to be min. Zinc Plated (interior use only).</li> <li>- DPC's to be installed between all masonry &amp; frame surfaces.</li> <li>- Vertical deviation must not exceed 1:500.</li> </ul>	
XFrame Component Quality	
<ul style="list-style-type: none"> <li>- All XFrame panel components must be free of damage.</li> <li>- All XFrame panel components must be fully seated.</li> <li>- Unseated parts can be corrected on site as required.</li> <li>- Ensure each locking plate is restrained via clip hardware.</li> <li>- Parts with delamination exceeding 10mm in length must be replaced.</li> </ul>	
Installation Quality Assurance	
<ul style="list-style-type: none"> <li>- Use shims to level panels as required.</li> <li>- Ensure shims are under anchor fixings (if required).</li> <li>- Check nuts for tightness prior to closing cavity.</li> <li>- Ensure insulation is continuous.</li> <li>- Pack any deviations/voids with loose insulation.</li> <li>- Replace damaged lining clips/linings.</li> <li>- Apply acoustic seals as specified.</li> <li>- Remove debris from internal wall cavity.</li> <li>- Verify that all bolts have correct washers.</li> <li>- Check bolt location against plans.</li> <li>- Validate all lining clips are fully seated.</li> <li>- Ensure structure has appropriate structural anchors.</li> <li>- Notify XFrame of any deviation from shop drawings.</li> </ul>	
Drawing Information	
12mm MDF with Tasmanian Oak Veneer (FSC CoC) Vertically orientated A grade quarter sawn (light graded) veneer with 8022-20 MIROTEC WB Clear Sealer, 8060-1-20 MIROTEC WB Clear Matt Top Coat.	
Fixed to frames using XFrame 010 Nylon IJM Clip (using 32mm CSK chipboard screws).	
Panels maintain an 18mm shadow gap at base.	
Project Name: Standard Reference Details	
Author: GF	XF Version: 8.26
Region: Global	Technical Office: NZ/AUS
Version: 10-04-26	Reference
<b>SP-7</b>	Copyright X-Frame PTY Limited 2023. XFrame™ and the XFrame Logo is a registered trademark of X-Frame Pty Ltd, Australia. The XFrame system is protected under WIPO Patent AU2022901589 and WO/2022/056598. Infringement on the patent is strictly prohibited.

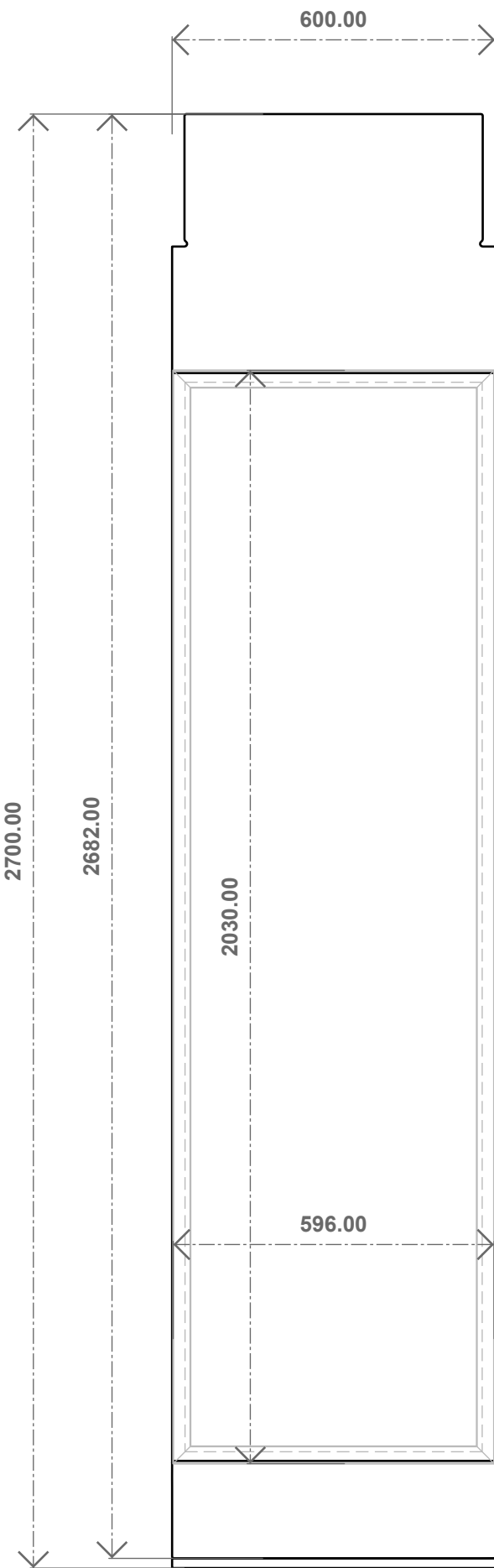


2700 x 1200mm Door Panel

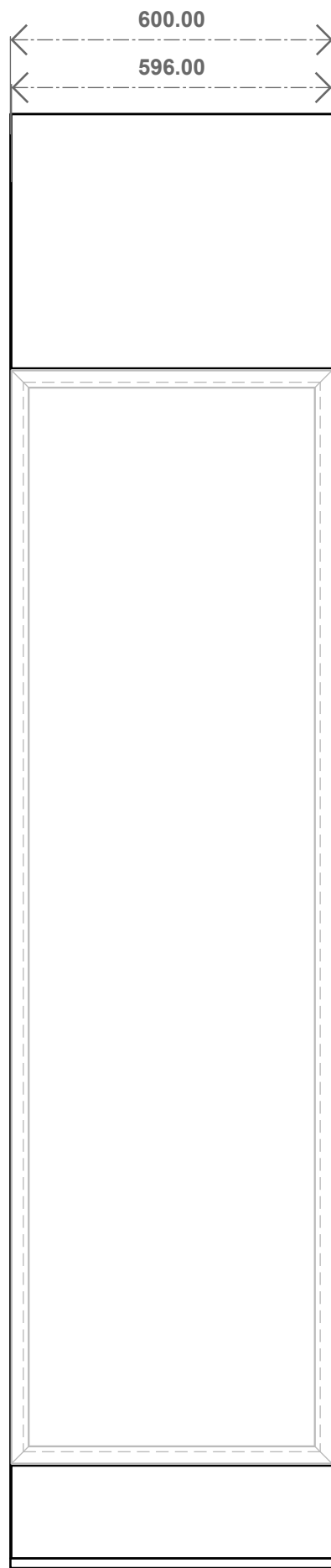


2700 x 1200mm Door External Linings

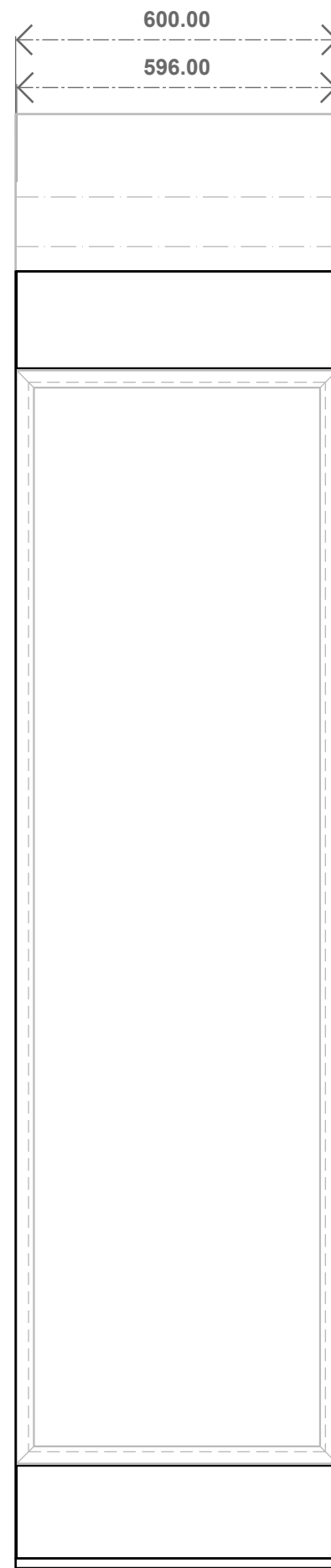
CONSTRUCTION NOTES	
Technical Office: NZ/AUS	Date: Apr-26
Structural Material Specification	
Radiata CD Structural Plywood F8/F8 Untreated. E0   FSC   AS/NZS 2269 Compliant. Layer-Up: 12-24-5, 17-38-5, 21-38-6 - or as specified).	
Fixing Specifications	
<ul style="list-style-type: none"> <li>- All washers are to be square.</li> <li>- Washers are to be 20x20x1.5mm for bolts not exceeding 8mm.</li> <li>- Washers are to be 35x35x3 for bolts not exceeding 12mm.</li> <li>- All metal hardware to be min. Zinc Plated (interior use only).</li> <li>- DPC's to be installed between all masonry &amp; frame surfaces.</li> <li>- Vertical deviation must not exceed 1:500.</li> </ul>	
XFrame Component Quality	
<ul style="list-style-type: none"> <li>- All XFrame panel components must be free of damage.</li> <li>- All XFrame panel components must be fully seated.</li> <li>- Unseated parts can be corrected on site as required.</li> <li>- Ensure each locking plate is restrained via clip hardware.</li> <li>- Parts with delamination exceeding 10mm in length must be replaced.</li> </ul>	
Installation Quality Assurance	
<ul style="list-style-type: none"> <li>- Use shims to level panels as required.</li> <li>- Ensure shims are under anchor fixings (if required).</li> <li>- Check nuts for tightness prior to closing cavity.</li> <li>- Ensure insulation is continuous.</li> <li>- Pack any deviations/voids with loose insulation.</li> <li>- Replace damaged lining clips/linings.</li> <li>- Apply acoustic seals as specified.</li> <li>- Remove debris from internal wall cavity.</li> <li>- Verify that all bolts have correct washers.</li> <li>- Check bolt location against plans.</li> <li>- Validate all lining clips are fully seated.</li> <li>- Ensure structure has appropriate structural anchors.</li> <li>- Notify XFrame of any deviation from shop drawings.</li> </ul>	
Drawing Information	
12mm MDF with Tasmanian Oak Veneer (FSC CoC) Vertically orientated A grade quarter sawn (light graded) veneer with 8022-20 MIROTEC WB Clear Sealer, 8060-1-20 MIROTEC WB Clear Matt Top Coat.	
Fixed to frames using XFrame 010 Nylon IJM Clip (using 32mm CSK chipboard screws).	
Panels maintain an 18mm shadow gap at base.	
Project Name: Standard Reference Details	
Author: GF	XF Version: 8.26
Region: Global	Technical Office: NZ/AUS
Version: 10-04-26	Reference
SP-8	Copyright X-Frame PTY Limited 2023. XFrame™ and the XFrame Logo is a registered trademark of X-Frame Pty Ltd, Australia. The XFrame system is protected under WIPO Patent AU2022901589 and WO/2022/056598. Infringement on the patent is strictly prohibited.



2700 x 600mm Window Panel



2700 x 600mm Window Panel  
External Linings



2700 x 600mm Window Panel  
Internal Linings

<b>CONSTRUCTION NOTES</b>	
Technical Office: NZ/AUS	Date: Apr-26
<b>Structural Material Specification</b>	
Radiata CD Structural Plywood F8/F8 Untreated. E0   FSC   AS/NZS 2269 Compliant. Layer-Up: 12-24-5, 17-38-5, 21-38-6 - or as specified).	
<b>Fixing Specifications</b>	
<ul style="list-style-type: none"> <li>- All washers are to be square.</li> <li>- Washers are to be 20x20x1.5mm for bolts not exceeding 8mm.</li> <li>- Washers are to be 35x35x3 for bolts not exceeding 12mm.</li> <li>- All metal hardware to be min. Zinc Plated (interior use only).</li> <li>- DPC's to be installed between all masonry &amp; frame surfaces.</li> <li>- Vertical deviation must not exceed 1:500.</li> </ul>	
<b>XFrame Component Quality</b>	
<ul style="list-style-type: none"> <li>- All XFrame panel components must be free of damage.</li> <li>- All XFrame panel components must be fully seated.</li> <li>- Unseated parts can be corrected on site as required.</li> <li>- Ensure each locking plate is restrained via clip hardware.</li> <li>- Parts with delamination exceeding 10mm in length must be replaced.</li> </ul>	
<b>Installation Quality Assurance</b>	
<ul style="list-style-type: none"> <li>- Use shims to level panels as required.</li> <li>- Ensure shims are under anchor fixings (if required).</li> <li>- Check nuts for tightness prior to closing cavity.</li> <li>- Ensure insulation is continuous.</li> <li>- Pack any deviations/voids with loose insulation.</li> <li>- Replace damaged lining clips/linings.</li> <li>- Apply acoustic seals as specified.</li> <li>- Remove debris from internal wall cavity.</li> <li>- Verify that all bolts have correct washers.</li> <li>- Check bolt location against plans.</li> <li>- Validate all lining clips are fully seated.</li> <li>- Ensure structure has appropriate structural anchors.</li> <li>- Notify XFrame of any deviation from shop drawings.</li> </ul>	
<b>Drawing Information</b>	
12mm MDF with Tasmanian Oak Veneer (FSC CoC) Vertically orientated A grade quarter sawn (light graded) veneer with 8022-20 MIROTEC WB Clear Sealer, 8060-1-20 MIROTEC WB Clear Matt Top Coat.	
Fixed to frames using XFrame 010 Nylon IJM Clip (using 32mm CSK chipboard screws).	
Panels maintain an 18mm shadow gap at base.	
<b>Project Name: Standard Reference Details</b>	
Author: GF	XF Version: 8.26
Region: Global	Technical Office: NZ/AUS
Version: 10-04-26	Reference
<b>SP-9</b>	Copyright X-Frame PTY Limited 2023. XFrame™ and the XFrame Logo is a registered trademark of X-Frame Pty Ltd, Australia. The XFrame system is protected under WIPO Patent AU2022901589 and WO/2022/056598. Infringement on the patent is strictly prohibited.



XFRAME™

Drawing Name:

# Standard Window Panel Elevations

# XFrame Interior Fitout Install Specifications

## Execution and Preparation

A. Assembly: Assemble the framing in accordance with the XFrame Assembly Instructions.

B. Site Install: Before commencing installation, survey the structure. Check dimensions, line, level and fixing points. Report immediately to the Superintendent if the structure is unsuitable to receive the Works.

If the structure/ substrate is unsuitable, propose remedial action to make the structure suitable. Bases/ backgrounds are to be rigid, dry, sound, smooth, clean, free from dust, dirt, grease and other contaminants before systems/ products are installed.

Cutting, chasing, plugging, making good and other necessary procedures required to the substrate or to adjacent work, that cannot/ should not be undertaken after the installation of the Works, must be completed. Any cutting, chasing or alteration to the framing system is to be confirmed with the manufacturer prior to undertaking such works.

Tolerances of the structure/ substrate to be suitable to permit the required configuration and specified tolerances of the finished systems/ products.

C. Provide necessary protective devices to protect all goods and materials, at all stages through to Practical Completion, against damage arising from but not limited to weather conditions, moisture, heat, humidity, direct sunlight, construction activities, other contractors, warping, distortion, abrasion and other conditions which could have an adverse effect on any goods and/ or materials.

Carefully remove all temporary protective elements immediately before Practical Completion or at an appropriate time to the acceptance of the Superintendent and leave the Works perfectly clean and fit for immediate use.

## Wall Framing Installation

A. XFrame Partition Wall System must be assembled and erected in strict accordance with the manufacturer's instructions. All work to be in accordance with AS 1684 and AS 1720.1 and those standard named overleaf.

B. Packing: Packing is to be provided where appropriate and be suitable, light and at fixed points to take up tolerances and prevent distortion. If timber is used as packing, it is to have received the same preservative treatment and have an equivalent moisture content to the adjacent timber. Packings are not to intrude into zones that are to be filled with sealant or areas required for drainage.

C. Fixings: XFrame recommended screw fixings and connection plates are to be used as the first option to allow for disassembly. Fixing and jointing methods, types, sizes and spacing of fastenings are to comply with relevant Australian Standards.

D. Washers: Plain washers: To comply with AS 1237.1. Washers are to be of material and finish to match bolts/ screws. Dimensions when seated directly on timber surfaces, unless specified otherwise: Side length: Not less than three times bolt diameter. Thickness: Not less than 0.25 times bolt diameter.

E. Bolted joints: Accurately locate holes to diameters as close as practicable to the nominal bolt diameter and not more than 2mm larger. Washers are to be placed under all bolt heads and nuts, which bear directly on to timber. Use spring washers in locations that will be hidden or inaccessible in the completed work.

Tighten bolts so that washers just bite the surface of the timber and at least one complete thread protrudes from the nut. Do not split or otherwise damage the timber. Check at agreed regular intervals up to Practical Completion and tighten as necessary to prevent slackening of joints

## Installation Tolerances

### A. Walls:

1. Verticality in 2000mm (generally): Permitted deviation of 1:500.
2. Flatness\* in 2000mm (generally): Permitted deviation of 3mm.