

Room-in-Room

North American Range





Contents









Introducing XFrame	04
Circularity	06
Locality	08
Company History	10
8'x6' 1-2 People	14
10'x10' 4-5 People	18
12'x10' 4-5 People	22
14'x12' 3-4 People	26
26'x12' 9-14 People	30



Introducing XFrame

XFrame is a precision fabricated lightweight timber framing system that enables change-of-use, end-of-life recovery and circularity across institutional and commercial construction sectors. XFrame works alongside existing glass front providers to deliver demountable 'room-in-room' spaces that are acoustically controlled and meet the highest standard of architectural design.

XFrame Features

-  Design for rapid and hassle free installation.
-  Made from natural and quickly renewable materials.
-  Engineered, geometrically stable and scalable.
-  Carbon sequestering structural frame.
-  End-of-life flexibility via component & panel modularity.
-  Eco-system design for effective circularity.
-  Fabricated in Ontario, Canada.
-  Meets local compliance requirements.

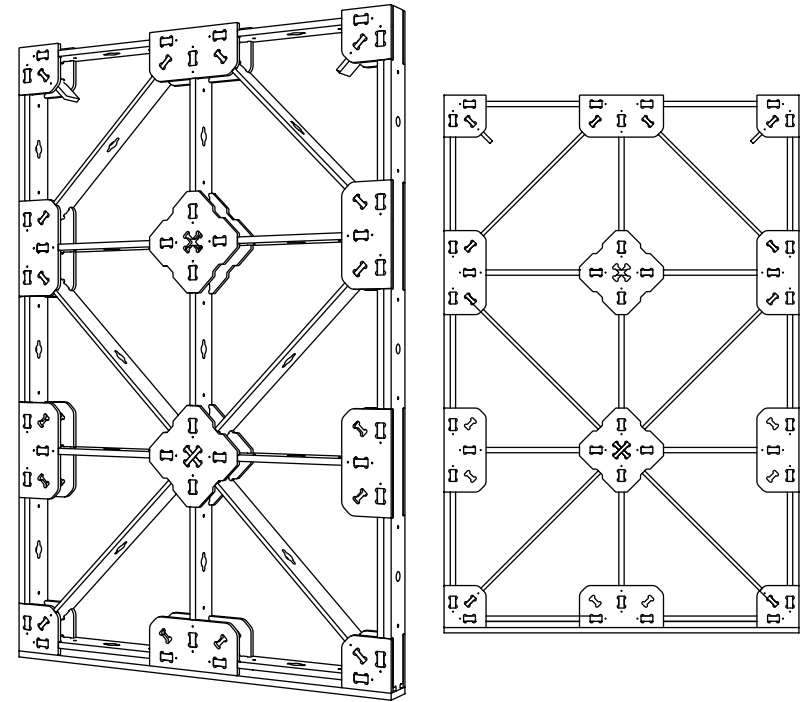
Low-Carbon Circularity

The building and construction industry is the world's largest consumer of raw virgin materials while also being the largest producer of solid waste.

XFrame is a circular response to this unprecedented waste problem. XFrame allows spaces to be easily changed over time - unlocking material recovery and preventing demolition waste.

XFrame is manufactured locally from sustainably sourced softwood. Standard parts form a unique light-weight panel structure that allows linings to be attached through a patented clip-on/clip-off system. Through the standardisation of panels and linings, and the demountable interfaces, an ecosystem of reusable parts is created.

Using XFrame our goal is to make the deconstruction and reuse of building materials an attractive and economically feasible end-of-life material recovery strategy.



XFrame Wall Carbon Breakdown

-12.20kg

Total calculated carbon related emission of 1m² XFrame Wall.

-4.38kg Frame Component:

FSC Certified 12mm and 1/2inch Plywood.

-7.40kg Lining Components:

FSC Certified 18mm with PB Laminate.

0.20kg Hardware Components:

Calculated based off mild sheet carbon emissions per metric tonne.

About this data:

XFrame calculates project carbon costs using volumetric data from an as-fabricated 3D digital model. Components are categorised by their respective material type and volumes summed for carbon calculation using localised environmental product declaration (EPD) data. When exact EPD data is unavailable XFrame uses the next regionally appropriate EPD information and applies an additional variance factor for this data source. Carbon emissions reported refer to (BS) EN 15804 lifecycle stages A1-A3 only. Carbon emissions reported include both biogenic carbon (GWPB [kg CO₂-eq.]) and fossil carbon (GWFP [kg CO₂-eq.]) data sources. For further information pertaining to lifecycle stages A4-C4 contact XFrame.



Made Local

Your spaces are made in Canada through XFrame's distributed manufacturing network. By sourcing local materials and producing spaces in the region of purchase, we ensure shorter lead times, reduced manufacturing and transportation emissions, and dependable long-term service and support. This local approach is supported by a network of Canadian design, supply, and fabrication partners listed below.

Local Canadian Partners

Design Partner:

MODUS ID

Canadian industrial design firm with expertise in workplace and commercial interiors.

Supply Partner:

muraflex

Canada-based manufacturer of demountable wall systems and interior partitions.

Fabrication Partners:

**DIGITAL
FABRICATION**

Ontario-based architectural fabricator specializing in precision and custom manufacturing.



Company History

XFrame was founded in New Zealand with a clear ambition: to rethink how interior spaces are made through fully demountable, reusable systems that eliminate waste and enable circularity.

Originating from university research and refined through commercial projects across New Zealand and Australia, the company developed a design-led approach grounded in engineering precision and architectural adaptability. XFrame's patented modular lattice structure challenged conventional fitout practices, demonstrating that high-performance interiors can draw on natural, low carbon materials and be both flexible and sustainable.

XFrame has now delivered more than 150 projects across the Asia Pacific region. These projects include national scale retail banking refurbishments, retail fashion, speculative suites, university laboratory's, government departmental office spaces, and a range of private company headquarters.

Jump to case-studies on our website to learn more about completed works.

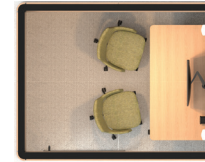




Standard Sizes

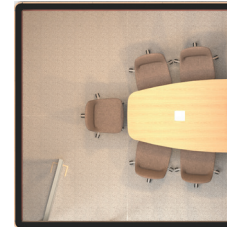
6'x8'

1-2 People



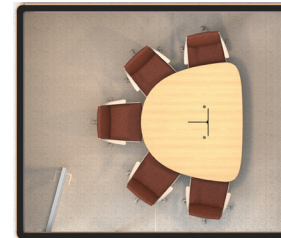
10'x10'

4-5 People



12'x10'

4-5 People



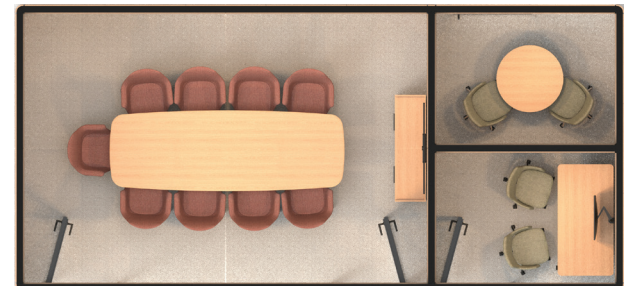
14'x12'

2-3 People



26'x12' Combo

9-14 People





6'x8'

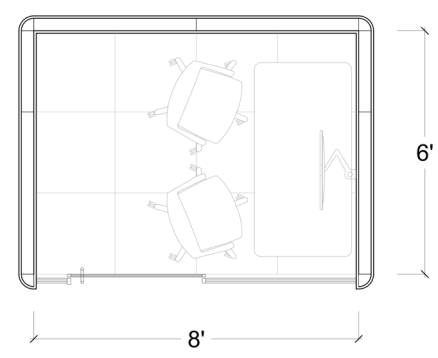
A room for 1-2 people to zone in and get things done. Ideal for private conversations, video calls, and virtual collaboration.



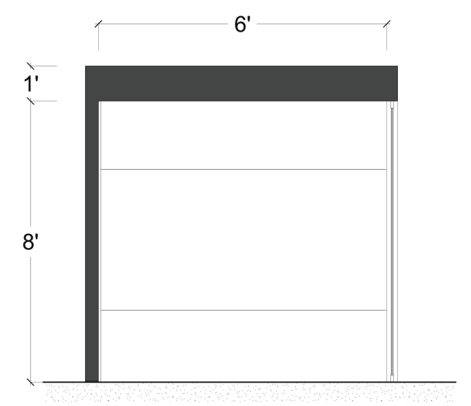
6' x 8' Specifications

- | | | |
|---------------------|---------------------|-------------------|
| 1. HPL Whiteboard | 3. PET felt Greige | 5. PET felt Slate |
| 2. Powdercoat Black | 4. TFL Acacia Honey | |

Floor Plan



Room Elevation





10'x10'

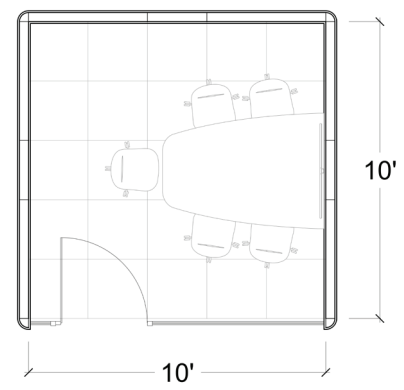
Brainstorm without disrupting your neighbors. Space for 4-5 person team meetings and private one-on-one conversations.



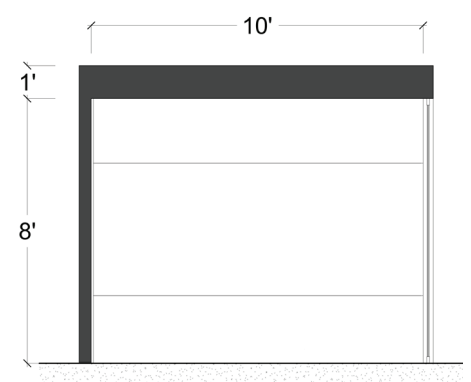
10' x 10' Specifications

- | | |
|-------------------|-------------------------|
| 1. PET felt Brick | 3. TFL Acacia Honey |
| 2. HPL Whiteboard | 4. Powdercoat Champagne |

Floor Plan



Front Elevation





12'x10'

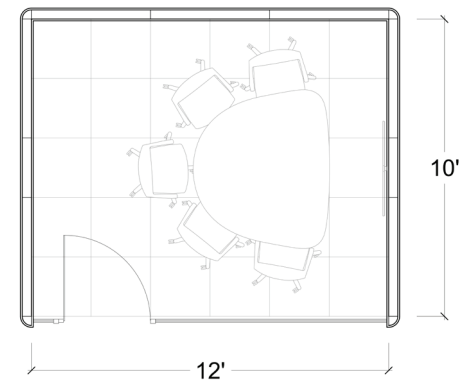
Spaces for 4-5 person teams and client conversations. Share ideas, sell experiences and collaborate in complete privacy.



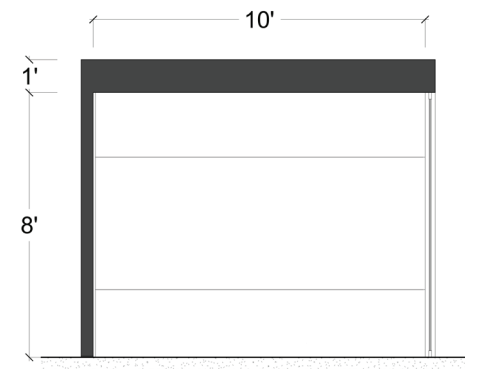
12' x 10' Specifications

- | | | |
|---------------------|-------------------|---------------------------|
| 1. TFL Acacia Honey | 3. TFL Terrarossa | 5. TFL Terrarossa |
| 2. PET felt Ecrú | 4. HPL Whiteboard | 6. Powdercoat Matte White |

Floor Plan



Front Elevation





14'x12'

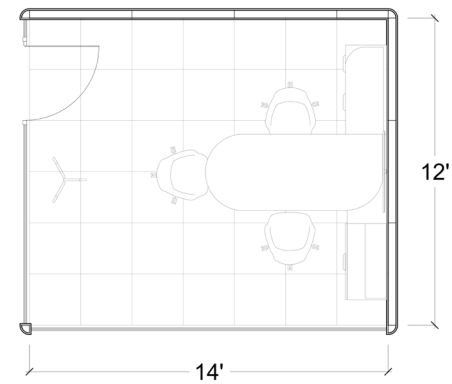
A multiuse private office that doubles as a collaborative meeting space for 3-4 people.



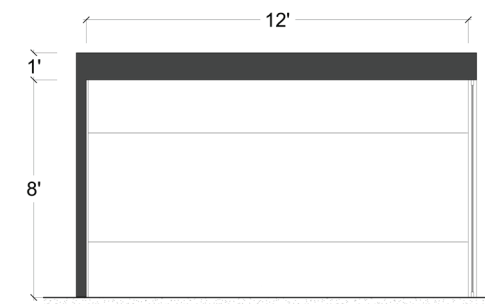
14' x 12' Specifications

- | | |
|-------------------|---------------------|
| 1. HPL Whiteboard | 3. PET felt Greige |
| 2. TFL Kiss Curl | 4. Powdercoat Black |

Floor Plan



Front Elevation





26'x12'

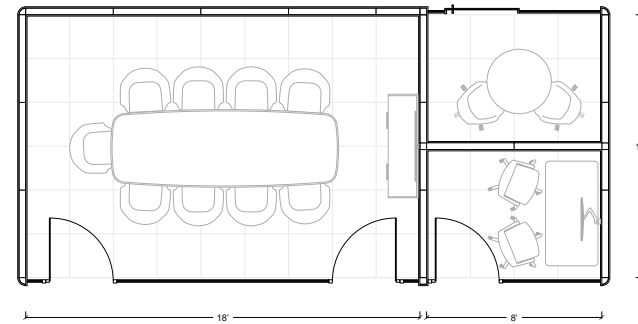
A multi-room combo consisting of one 18'x12' room for larger 9-10 person team meetings combined with two small 8'x6' focus rooms for 1-2 people.



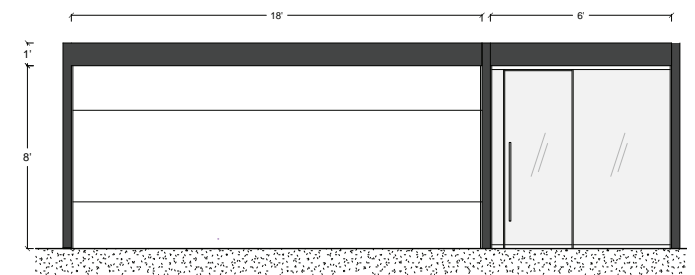
26' x 12' Specifications

- | | |
|---------------------|---------------------|
| 1. HPL Whiteboard | 3. PET felt Greige |
| 2. TFL Acacia Honey | 4. Powdercoat Black |

Floor Plan



Front Elevation



Contact

Lisa Henderson

Sales in the Ontario Region

e. lisa@henderson2office.com

m. 647 285 0276

w. henderson2office.com

Website

xframegroup.com

General Enquiries

hello@xframegroup.com



Designed in
New Zealand

XFRAME®